



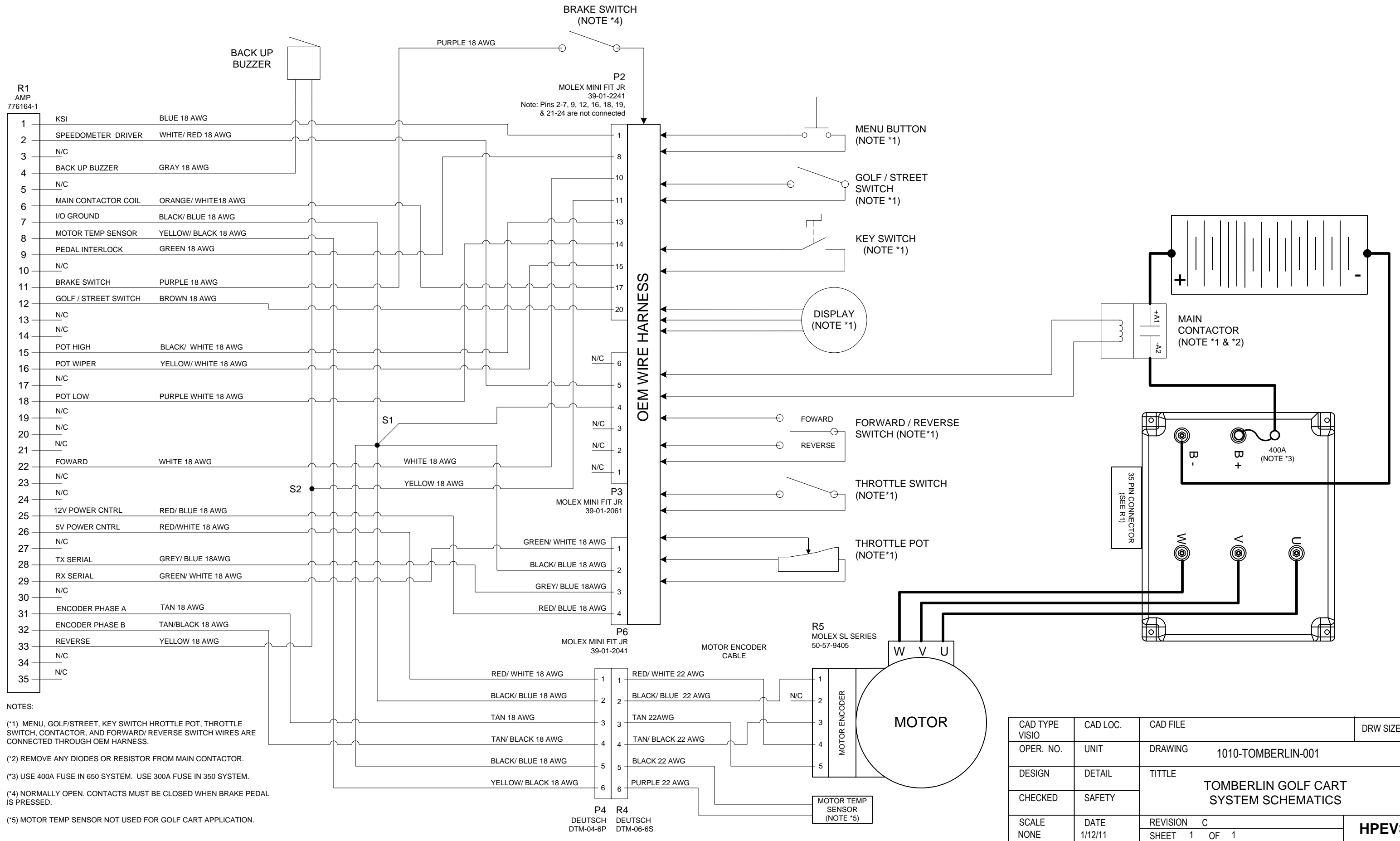
1551 S. Vineyard Avenue
Ontario, CA 91761
(909) 923-1973

Wiring Schematics

Tomberlin Golf Cars

REV. C

NOTICE: This drawing is the property of Hi Performance Electric Vehicle Systems Inc., and/or its subsidiaries and affiliates (individually and collectively "HPEVS"), and contains highly proprietary, confidential, and trade secret information of HPEVS. The recipient of this drawing agrees (a) to use the information contained herein for the purpose for which it was furnished by HPEVS (b) to return this drawing upon HPEVS request. This notice shall appear on any complete or partial reproduction of this drawing.



NOTES:

(*1) MENU, GOLF/STREET, KEY SWITCH HROTTLE POT, THROTTLE SWITCH, CONTACTOR, AND FORWARD/ REVERSE SWITCH WIRES ARE CONNECTED THROUGH OEM HARNESS.

(*2) REMOVE ANY DIODES OR RESISTOR FROM MAIN CONTACTOR.

(*3) USE 400A FUSE IN 650 SYSTEM. USE 300A FUSE IN 350 SYSTEM.

(*4) NORMALLY OPEN. CONTACTS MUST BE CLOSED WHEN BRAKE PEDAL IS PRESSED.

(*5) MOTOR TEMP SENSOR NOT USED FOR GOLF CART APPLICATION.

CAD TYPE	CAD LOC.	CAD FILE	DRW SIZE B
VISIO	UNIT	DRAWING	1010-TOMBERLIN-001
DESIGN	DETAIL	TITTLE	TOMBERLIN GOLF CART SYSTEM SCHEMATICS
CHECKED	SAFETY	REVISION	C
SCALE	DATE	SHEET	1 OF 1
NONE	1/12/11		

HPEVS