



**620 Magnolia Avenue
Suite B
Ontario, CA 91762
(909) 923-1973**

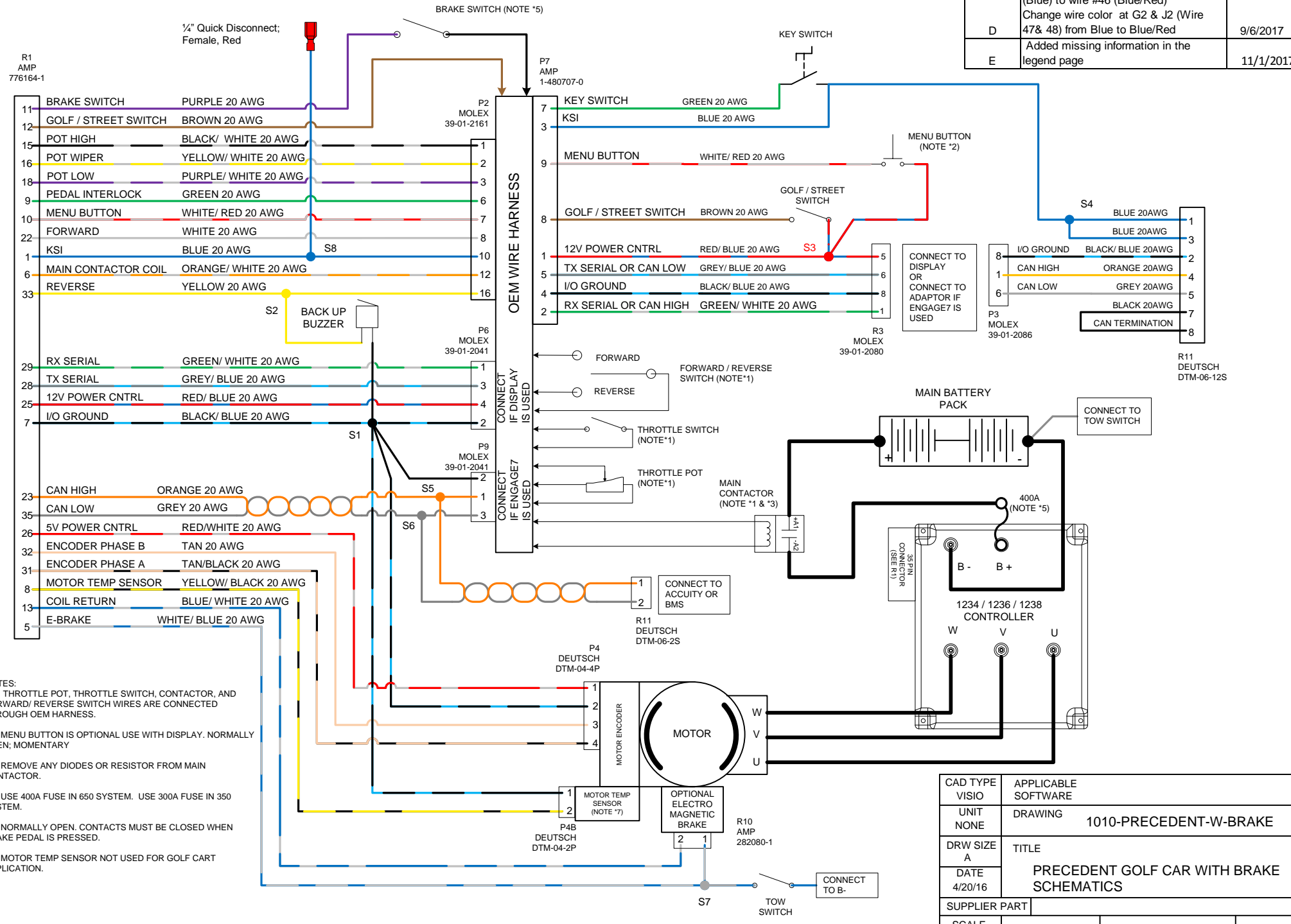
WIRING SCHEMATICS

**CLUB CAR PRECEDENT
w/AUTOMATIC PARKING
BRAKE**

**REVISION: E
DATE: 1-19-18**

NOTICE: This drawing is the property of HI Performance Electric Vehicle Systems Inc., and/or its subsidiaries and affiliates (individually and collectively "HPEVS"), and contains highly proprietary, confidential, and trade secret information of HPEVS. The recipient of this drawing agrees (a) to use the information contained herein for the purpose for which it was furnished by HPEVS (b) to return this drawing upon HPEVS request. This notice shall appear on any complete or partial reproduction of this drawing.

REV	DESCRIPTION	DATE
A	INITIAL RELEASE	4/20/2016
D	Change splice S3 location at wire #40 (Blue) to wire #46 (Blue/Red) Change wire color at G2 & J2 (Wire 47 & 48) from Blue to Blue/Red	9/6/2017
E	Added missing information in the legend page	11/1/2017



- NOTES:
- (*1) THROTTLE POT, THROTTLE SWITCH, CONTACTOR, AND FORWARD/ REVERSE SWITCH WIRES ARE CONNECTED THROUGH OEM HARNESS.
 - (*2) MENU BUTTON IS OPTIONAL USE WITH DISPLAY. NORMALLY OPEN; MOMENTARY
 - (*3) REMOVE ANY DIODES OR RESISTOR FROM MAIN CONTACTOR.
 - (*4) USE 400A FUSE IN 650 SYSTEM. USE 300A FUSE IN 350 SYSTEM.
 - (*5) NORMALLY OPEN. CONTACTS MUST BE CLOSED WHEN BRAKE PEDAL IS PRESSED.
 - (*6) MOTOR TEMP SENSOR NOT USED FOR GOLF CART APPLICATION.

CAD TYPE	APPLICABLE SOFTWARE
VISIO	
UNIT	DRAWING
NONE	1010-PRECEDENT-W-BRAKE
DRW SIZE	TITLE
A	PRECEDENT GOLF CAR WITH BRAKE SCHEMATICS
DATE	
4/20/16	
SUPPLIER PART	
SCALE	SHEET 1 OF 5
1:1	REVISION E
	HPEVS