



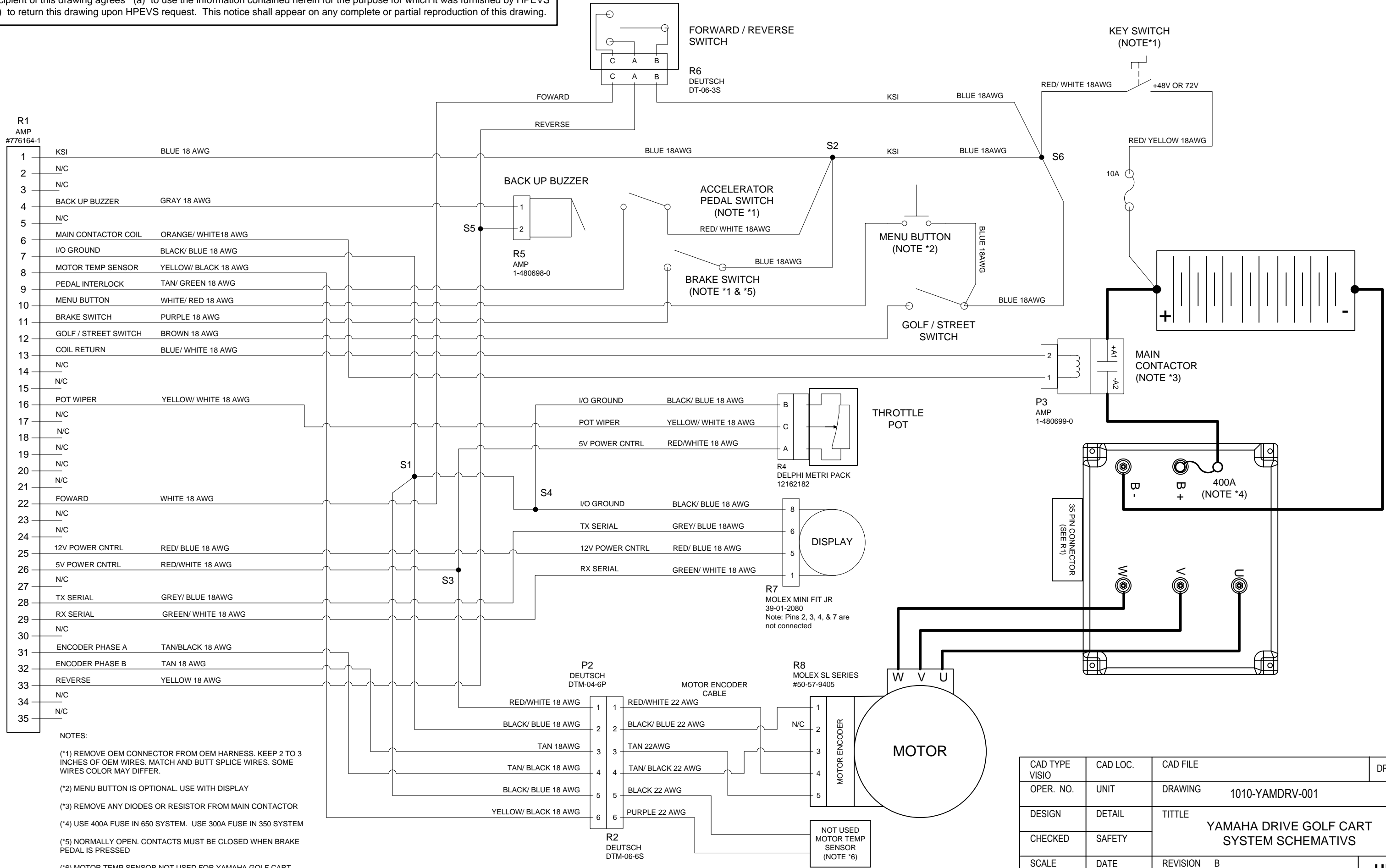
**1551 S. Vineyard Avenue
Ontario, CA 91761
(909) 923-1973**

Wiring Schematics

Yamaha Golf Cars

REV. B

NOTICE: This drawing is the property of Hi Performance Electric Vehicle Systems Inc., and/or its subsidiaries and affiliates (individually and collectively "HPEVS"), and contains highly proprietary, confidential, and trade secret information of HPEVS. The recipient of this drawing agrees (a) to use the information contained herein for the purpose for which it was furnished by HPEVS (b) to return this drawing upon HPEVS request. This notice shall appear on any complete or partial reproduction of this drawing.



R1
AMP
#776164-1

1	KSI	BLUE 18 AWG
2	N/C	
3	N/C	
4	BACK UP BUZZER	GRAY 18 AWG
5	N/C	
6	MAIN CONTACTOR COIL	ORANGE/ WHITE 18 AWG
7	I/O GROUND	BLACK/ BLUE 18 AWG
8	MOTOR TEMP SENSOR	YELLOW/ BLACK 18 AWG
9	PEDAL INTERLOCK	TAN/ GREEN 18 AWG
10	MENU BUTTON	WHITE/ RED 18 AWG
11	BRAKE SWITCH	PURPLE 18 AWG
12	GOLF / STREET SWITCH	BROWN 18 AWG
13	COIL RETURN	BLUE/ WHITE 18 AWG
14	N/C	
15	N/C	
16	POT WIPER	YELLOW/ WHITE 18 AWG
17	N/C	
18	N/C	
19	N/C	
20	N/C	
21	N/C	
22	FOWARD	WHITE 18 AWG
23	N/C	
24	N/C	
25	12V POWER CNTRL	RED/ BLUE 18 AWG
26	5V POWER CNTRL	RED/WHITE 18 AWG
27	N/C	
28	TX SERIAL	GREY/ BLUE 18 AWG
29	RX SERIAL	GREEN/ WHITE 18 AWG
30	N/C	
31	ENCODER PHASE A	TAN/BLACK 18 AWG
32	ENCODER PHASE B	TAN 18 AWG
33	REVERSE	YELLOW 18 AWG
34	N/C	
35	N/C	

NOTES:
 (*1) REMOVE OEM CONNECTOR FROM OEM HARNESS. KEEP 2 TO 3 INCHES OF OEM WIRES. MATCH AND BUTT SPLICE WIRES. SOME WIRES COLOR MAY DIFFER.
 (*2) MENU BUTTON IS OPTIONAL. USE WITH DISPLAY
 (*3) REMOVE ANY DIODES OR RESISTOR FROM MAIN CONTACTOR
 (*4) USE 400A FUSE IN 650 SYSTEM. USE 300A FUSE IN 350 SYSTEM
 (*5) NORMALLY OPEN. CONTACTS MUST BE CLOSED WHEN BRAKE PEDAL IS PRESSED
 (*6) MOTOR TEMP SENSOR NOT USED FOR YAMAHA GOLF CART APPLICATION.

CAD TYPE	VISIO	CAD LOC.	CAD FILE	DRW SIZE	B
OPER. NO.		UNIT	DRAWING 1010-YAMDRV-001		
DESIGN	DETAIL	TITTLE	YAMAHA DRIVE GOLF CART SYSTEM SCHEMATICS		
CHECKED	SAFETY				
SCALE	NONE	DATE	12/15/10	REVISION	B
				SHEET	1 OF 1
					HPEVS